



RICE



2023

# ENGLISH AS A SECOND LANGUAGE

Intensive English Program | ESL Communication Skills Program | Online ESL Certificate Programs

Rice University | Houston, Texas

[esl.rice.edu](https://esl.rice.edu)



# WELCOME



Welcome to the English as a Second Language Program at Rice University. We provide non-native speakers of English the opportunity to improve their language skills in small classes that use an integrated-skills approach. We offer the daytime **Intensive English Program** (page 2), the evening **ESL Communication Skills Program** (page 7), the **Online English and Academic Preparation Program** (page 8), and the **Online English Success in Workplace Program** (page 9). We have taught English as a Second Language to students from Houston and around the world since 1978. For over 45 years, our program has been a global gateway to the Rice experience.

Dr. Kathleen Sayers  
Director

## Intensive English Program

### Program Description

The Rice University Intensive English Program is open to non-native speakers of English who have a serious desire to improve their language skills. This challenging program is useful to working professionals and to students preparing for university study or professional programs. Students from more than 125 countries have attended the program.

The Intensive English Program offers six sessions each year; each session lasts seven weeks. In one year, students should be able to progress through the six-level core program. Classes meet on the Rice campus five days a week for four hours daily.

The course of study is based on an integrated-skills approach with listening, speaking, reading, writing and grammar components. Fluency and accuracy in both spoken and written English are emphasized. **Classes average 12 students.** The small class size allows each participant a maximum amount of individual attention and an opportunity to develop conversational skills.

### Class Schedule

Classes at any specific level, beginning through advanced, will depend on sufficient enrollment. Students must be willing to accept a morning (8:30 a.m.-12:30 p.m.) or afternoon (1-5 p.m.) schedule as assigned by the director.

### Course Description

Intensive English Program students build practical English skills for general, academic or professional purposes.

#### Levels 1-4

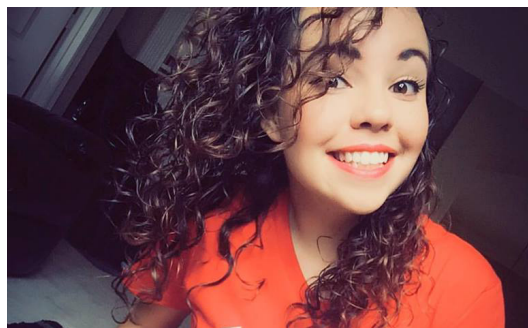
In Levels 1-4, students concentrate on developing fundamental English skills in an interactive classroom setting. Coursework emphasizes those skills necessary for effective oral and written communication. Instruction covers all areas of language development: practical vocabulary, basic language structures, and the essentials of reading, writing, listening and speaking.

#### Levels 5-6

In Levels 5-6, students continue to develop fluency and accuracy. Coursework focuses on comprehensive skills as well as academic preparation skills, including the fundamentals of essay writing and the development of critical reading, listening and note-taking skills.

#### Advanced Level

The Advanced Level is for students whose proficiency in English is beyond the six-level core program. Courses at this level focus on diverse areas of interest such as current issues, cross-cultural concerns, vocabulary expansion, public speaking, pronunciation, advanced reading and writing, and business English. Students may enroll in the Advanced Level more than one time with a different curriculum each time. TOEFL and IELTS preparation courses that emphasize test-taking and refining English language skills are also offered in selected sessions.



**“Houston is a city with wonderful, multicultural aspects, which makes the experience more enriching. The Rice ESL Program takes this Houston essence to its classes.”**

**- Priscilla Araya, Costa Rica**

### Intensive English Program Admission

Persons applying for admission to the Intensive English Program must have graduated from secondary school. Admission to the program does not constitute admission to any other unit of Rice University. Students will not receive academic credit for courses in this program.

### Program Fees

Tuition: \$2,650  
Testing and registration: \$100

All new students pay \$2,750 for their first session: \$2,650 tuition plus the \$100 non-refundable testing and registration fee. A deposit of \$500 is due upon acceptance into the program. New students must pay the balance of tuition by the placement test date for the session in which they are enrolling (see calendar below).

### Application

Complete the online application at [esl.rice.edu/intensive-english-program/apply](http://esl.rice.edu/intensive-english-program/apply). Applicants must submit their most recent academic transcript.

### Books

Book costs average approximately \$175 per session.

### Student responsibility for health care

Information regarding student health care and medical insurance responsibilities is available at [esl.rice.edu/intensive-english-program/tuition-fees-and-refund-policy](http://esl.rice.edu/intensive-english-program/tuition-fees-and-refund-policy).

### Scholarships

A limited number of partial scholarships are available to re-enrolling students.

## Intensive English Program Calendar 2023

### Session Dates: January 3-February 28

Application and re-enrollment deadline: November 18, 2022  
Placement test: January 3  
Orientation: January 4  
Classes: January 10-February 28  
Martin Luther King Jr. holiday: January 16

### Session Dates: March 1-April 26

Application and re-enrollment deadline: January 27  
Placement test: March 1  
Orientation: March 1  
Classes: March 8-April 26  
Spring holiday: April 7  
Staff development day (no classes): April 10

### Session Dates: April 27-June 23

Application and re-enrollment deadline: March 31  
Placement test: April 27  
Orientation: April 28  
Classes: May 4-June 23  
Juneteenth holiday: June 19  
Memorial Day holiday: May 29

### Session Dates: June 23-August 22

Application and re-enrollment deadline: May 26  
Placement test: June 23  
Orientation: June 26  
Classes: July 5-August 22

### Session Dates: August 24-October 19

Application and re-enrollment deadline: July 28  
Placement test: August 24  
Orientation: August 25  
Classes: August 31-October 19  
Labor Day holiday: September 4  
Staff development day (no classes): October 6

### Session Dates: October 19-December 15

Application and re-enrollment deadline: September 22  
Placement test: October 19  
Orientation: October 20  
Classes: October 26-December 15  
Cultural activity: November 14  
Thanksgiving holidays: November 22-24





## Student Services

Students in the Intensive English Program receive personal attention from the program's staff. Special services include:

- Orientation to the program, the Rice University campus and the city of Houston
- A Rice University Student ID that allows the student access to campus activities, such as movies, sports and concerts, free or at a reduced rate, for a fee of \$10 per seven-week session\*
- Access to the state-of-the-art **Recreation Center** for a fee of \$79 per seven-week session.\*
- Immigration counseling
- Academic advising for college and university admissions
- Student progress evaluation at the end of each session
- Access to campus parking in assigned areas for a \$33 fee per seven-week session\*
- Student activities each session, including picnics, the rodeo, the zoo, sports events such as professional baseball, basketball and soccer, and field trips to museums and other destinations

\*Fees are subject to increase.

## Cost of Living Estimates

Students in the Rice University Intensive English Program spend an average of \$2,200 per month on rent, food and other expenses. The following chart gives monthly cost of living estimates.

### Moderate-Level Monthly Expenses

Rent:	\$1,200
Food:	\$700
Personal*:	\$300

**Total:** **\$2,200**

\*Includes transportation, clothing, recreation, incidentals, etc.

## Housing Information

Students are responsible for making their own housing arrangements. Moderately priced facilities are generally available. Although the program does not provide housing or make housing arrangements, students may contact the Intensive English Program for a list of housing suggestions.

## Intensive English Program Refund Policy

The \$100 testing and registration fee is non-refundable. New students canceling by 4 p.m. on the last business day before classes begin will be charged a \$100 cancellation fee to cover the cost of testing and registration. Returning students canceling after the re-enrollment deadline and by 4 p.m. on the last business day before classes begin will be charged a \$50 cancellation fee. Students withdrawing after 4 p.m. on the last business day before classes begin and before 4 p.m. on the tenth day of class will receive a refund of one-third of their tuition. (Students who have paid \$2,650 will receive a \$885 refund.) There is no refund for any student withdrawing after the tenth day of class. All refund requests must be submitted in writing to [esl@rice.edu](mailto:esl@rice.edu). See the full refund policy at [esl.rice.edu/intensive-english-program/tuition-fees-and-refund-policy](http://esl.rice.edu/intensive-english-program/tuition-fees-and-refund-policy).



“The teachers are incredibly passionate, dedicated and professional. I did enjoy the quality of the program but, most importantly, the experience to meet such lovely and caring people at Rice.”

- Henry Quiroz, Chile

# Visa Information

## F-1 Visa Application Process

The Intensive English Program is authorized to issue the I-20 form that the student needs to apply for an F-1 student visa for full-time intensive English study.

Students requesting an I-20 must submit the following documentation to the Rice University Intensive English Program:

\_\_\_\_\_ Application and a non-refundable \$100 testing and registration fee (Fee must be paid at the time of submitting the application.)

\_\_\_\_\_ Deposit of \$400 (Payment is due when accepted into the program.)

\_\_\_\_\_ Confirmation of financial resources

(\$3,665 per month for tuition and living expenses)

\_\_\_\_\_ Most recent academic transcript

\_\_\_\_\_ Copy of passport identification page(s)  
(The copy must show picture, name, birth date and passport expiration date.)

Transfer students must also present:

\_\_\_\_\_ Signed transfer form from the foreign student adviser at the school the student last attended verifying eligibility to transfer. (The form may be downloaded from the ESL website.)

\_\_\_\_\_ Copy of I-20 from the school last attended

\_\_\_\_\_ Copy of F-1 visa page

\_\_\_\_\_ Copy of I-94 admission form

\_\_\_\_\_ Transcript from current school

The prospective F-1 student should present the following papers to a U.S. Consulate:

\_\_\_\_\_ Passport, valid for at least six months

\_\_\_\_\_ Confirmation of financial resources

\_\_\_\_\_ I-20 form

\_\_\_\_\_ Receipt for the I-901 SEVIS fee. (For further information, consult the U.S. government website at [ice.gov/sevis/i901/index.htm](https://ice.gov/sevis/i901/index.htm).)

To maintain F-1 visa status, a student must attend a full course of study (20 hours per week) in the Rice University Intensive English Program. F-1 students interested in taking time off from study should review the "Vacation Policy" at [esl.rice.edu/intensive-english-program/application-process](https://esl.rice.edu/intensive-english-program/application-process).

## Confirmation of Financial Resources

As part of the I-20 application process, the student must demonstrate proof of financial support for the duration of their planned length of study (\$3,665 per month for tuition and living expenses). This may be done by submitting **one** or more of the following:

1. Bank Statement(s) showing any of the options below:

- **Personal Funds**
- **Family Funds** plus a letter of support stating the intent to sponsor you during your studies
- **Personal Sponsor** plus a letter of support stating the intent to sponsor you during your studies

Bank statement(s) must be less than 6 months old. Statement(s) must give the following details about the account:

- Name on the account
- Current balance of available funds

These documents must also be presented to the U.S. Consulate with the visa application.

2. Affidavit of Financial Support (I-134) from an individual sponsor (U.S. citizen or permanent resident) inside the United States. Proof of financial resources must accompany the affidavit. Forms may be obtained from the U.S. government at [uscis.gov/files/form/i-134.pdf](https://uscis.gov/files/form/i-134.pdf).

3. A scholarship letter from the sponsoring organization or government detailing the amount of support the student will receive and state the duration of funding.

**Prospective students must enter the United States on a student visa.** Persons in the U.S. with diplomatic or other visas may also be eligible for the program provided study is not the main purpose of their stay in the United States.



“Improving my communication skills gave me more confidence to participate in important meetings and share my ideas and thoughts with coworkers and business partners. I have been able to develop my potential at work.”

- Diorgenes Borges, Brazil

### About Rice University

Rice University is a private, coeducational institution known for its academic excellence and the achievements of its faculty, graduates and students. Rice offers outstanding programs in architecture, business, engineering, humanities, music, natural science and social sciences.

Although admission to the Intensive English Program does not constitute admission to any other unit of Rice University, facilities of the university are available to Intensive English students, including the Fondren Library and the Recreation Center. Most activities are also available, including sports, exhibitions, concerts, films and lectures. For further information on the University, consult [rice.edu/virtualtours](http://rice.edu/virtualtours).



### About Houston

Located in the state of Texas, Houston has a metropolitan area population of more than six million. The city boasts two international airports, museums, operas, theaters, concerts, festivals, outstanding restaurants, professional sporting events, one of the world's foremost medical centers, the NASA Johnson Space Center and many other attractions.

Houston is the fourth largest city in the nation and is home to a culturally diverse population. A metrorail system connects downtown Houston with Rice University and the Texas Medical Center. Large retail centers such as the celebrated Galleria make Houston a favorite shopping destination for visitors from all over the world. Galveston's beaches, less than an hour away, afford many recreational opportunities.



#### Staff of the Rice University Language Programs

Kathleen Sayers, Ph.D., Director, Associate Dean,  
Glasscock School of Continuing Studies  
Pamela J. Howard, M.A., Associate Director  
Rachel Kraut, Ph.D., Director of Innovative Academic Programs  
Daniel Gutierrez, Ph.D., Assistant Director  
Estefania Hernandez, Enrollment Administrator/  
Communications and Marketing Specialist  
Victoria M. Zabarte, Enrollment Coordinator

#### Intensive English Program Faculty

Lisa Craven, M.Ed.  
Anna Hood, M.A.  
Martine Jéhan, M.A.  
Alice Llanos, M.A.  
Neda Zafarianian, Ed.D.

### Special Programs

Intensive English classes are available either on site or on the Rice University campus. A minimum of 12 students is required to form a class. Classes are offered at intermediate or advanced levels of proficiency. Course schedule and fees will vary according to the type of instruction. For more information, contact the Language Programs office at [esl@rice.edu](mailto:esl@rice.edu) or 713-348-4019.

**Apply Today**



# ESL Communication Skills Program

## *Intermediate and Advanced Levels*

The ESL Communication Skills Program offers classes for those who wish to improve their everyday English communication skills or enhance their command of English for professional purposes. These non-credit classes address spoken communication skills and are designed for those who do not wish to enroll in a full course of study. Classes are for students at an intermediate or advanced level of proficiency. Those planning to study on an F-1 visa should consult the Intensive English Program section (see page 2). Classes are small, with an average of 12 students per class. Students develop both fluency and accuracy in an interactive classroom setting.

Evening classes meet twice a week (either Monday and Wednesday or Tuesday and Thursday) for eight weeks. Classes meet from 5:45-7:15 p.m. or 7:30-9 p.m. on the Rice campus. The exact schedule of classes is determined by student enrollment. Advanced oral presentation skills, pronunciation and writing classes are offered in sessions when demand is sufficient. Students are assigned class days and times based on their proficiency levels and available space.

### Tuition and Fees

Tuition for each eight-week session is \$480, which includes a \$30 processing fee. Book costs are not included in the tuition.

### Program Calendar 2023

**Winter Session:** January 23-March 16, 2023

Discount deadline\*: Thursday, January 5

Application deadline/Placement test\*\*: Thursday, January 5

**Spring Session:** March 29-May 23, 2023

Discount deadline\*: Friday, March 10

Application deadline/ Placement test\*\*: Wednesday, March 15.

**Summer Session:** June 12-August 9, 2023

Discount deadline\*: Friday, May 19

Application deadline/Placement test\*\*: Wednesday, May 24

Juneteenth holiday: Monday, June 19

Independence Day holiday: Monday, July 3 and Tuesday, July 4

**Fall Session:** September 20-November 14, 2023

Discount deadline\*: Friday, August 29

Application deadline/Placement test\*\*: Wednesday, September 6

\* Students returning within a year receive a discount if the application is submitted by the discount deadline

\*\* Online placement testing link will be emailed.

Visit [esl.rice.edu](http://esl.rice.edu) to view course information, requirements and our refund policy.

**Apply Today**



# Online English and Academic Preparation

## Certificate Program



Online English and Academic Preparation is a certificate program for students with a high-intermediate to advanced level of English. The certificate program is designed to help students strengthen their English while developing academic skills necessary for success at an American university. Students may choose from two options within the certificate program:

- **Pre-Collegiate:** This option is for international students who would like to come to the United States to study for a bachelor's degree.
- **Grad Track:** This option is for international students who would like to pursue a master's or doctoral degree in the United States.

### Course Information

The total length of time required to complete the Online English and Academic Preparation certificate program is 10 weeks. This includes three 3-week courses and a 1-week final capstone project.

Students in both options will take the following courses:

- Listening, Speaking and Critical Thinking
- Writer's Workshop
- Reading and Notetaking

### Tuition and Fees

Pre-Collegiate - Application fee: \$30; Tuition: \$910

Grad Track - Application fee: \$30; Tuition: \$1,110

### Program Calendar 2023

**Winter Session:** January 5-March 21  
Application deadline: December 5, 2022

**Spring Session:** March 30-June 13  
Application deadline: March 13

**Summer Session:** June 22-September 7  
Application deadline: June 5

**Fall Session:** September 14-November 29  
Application deadline: August 28

### Program Requirements

#### Pre-Collegiate option

- demonstrate a minimum of a high-intermediate level of English
- completion or near completion of a high school diploma

#### Grad Track option

- demonstrate a minimum of an advanced level of English
- completion or near completion of a bachelor's degree

All students must complete the online orientation. This is not an I-20 granting program. Those planning to study on an F-1 visa should consult the Intensive English Program section (see page 2).

Visit [esl.rice.edu](https://esl.rice.edu) to view course information, requirements and our refund policy.

**Apply Today**



# Online English Success in the Workplace

## Certificate Program



English Success in the Workplace consists of three non-credit courses that start at an intermediate level. These courses use an integrated-skills approach to help students improve their command of English in the workplace and strengthen their communication skills. Courses include engaging instructional videos that can be played and paused as needed, a variety of practice activities and opportunities for interaction.

### Course Description

The program consists of three possible tracks:

**Track I:** 3 classes from low-intermediate to high-intermediate/low-advanced

**Track II:** 2 classes from intermediate to high-intermediate/low-advanced

**Track III:** 1 class for high-intermediate/low-advanced

### Tuition and Fees

Tuition and fees for each session are \$705 for new students, and \$675 for continuing students.

### Financial Aid

Please contact us at [esl@rice.edu](mailto:esl@rice.edu) to learn more about financial aid and scholarship opportunities for the Online English Success in the Workplace Certificate Program.

### Program Calendar 2023

**Winter Session:** January 19-March 20  
Application deadline: January 10

**Spring Session:** March 30-May 30  
Application deadline: March 13

**Summer Session:** June 22-August 23  
Application deadline: June 5

**Fall Session:** September 14-November 13  
Application deadline: August 28

### Program Requirements

This is not an I-20 granting program. Those planning to study on an F-1 visa should consult the Intensive English Program section (see page 2).

Students successfully completing through Level 5 will receive a program certificate. Students who do not finish Level 5 will receive a course certificate for each course completed.

Persons applying for admission to this program must have graduated from secondary school. New students must take the online placement test and complete the online orientation.

Visit [esl.rice.edu](http://esl.rice.edu) to view course information, requirements and our refund policy.

**Apply Today**



## Contact Us

Website: [esl.rice.edu](http://esl.rice.edu)

Email: [esl@rice.edu](mailto:esl@rice.edu)

Phone: 1-713-348-4019

### Location

The Language Programs office is located in the Anderson-Clarke Center near Entrance 8 at University Boulevard and Stockton Drive. See the campus map at [rice.edu/maps](http://rice.edu/maps). Students will receive detailed parking information before the start of each session.

### Take a Virtual Tour

Our building includes 24 classrooms, conference rooms, a language center, a freestanding auditorium and a commons area and terrace for events. [Take a tour.](#)

### Find us on Social Media

Stay connected! Follow us on social media to learn about upcoming events and see photos from social activities.



[facebook.com/RiceESL](https://facebook.com/RiceESL)



[twitter.com/RiceESL](https://twitter.com/RiceESL)



[instagram.com/riceesl](https://instagram.com/riceesl)



“I decided to pursue my academic career in the U.S. while I was a student at the Rice ESL Program. As I prepared for the GRE and TOEFL exams, I was able to apply all the language skills that I had gained for the first time, and it was really exciting to see how I could use my knowledge. I still see its huge impact on my academic writing.”

- Asya Ozkizilcik, Turkey