



# RICE



**2025**

## ENGLISH AS A SECOND LANGUAGE

Intensive English Program ■ ESL Communication Skills Program ■ Online ESL Certificate Programs

Rice University ■ Houston, Texas

[esl.rice.edu](http://esl.rice.edu)





Welcome to the English as a Second Language Program at Rice University. We provide non-native speakers of English the opportunity to improve their language skills in small classes that use an integrated-skills approach. We offer the daytime Intensive English Program (page 2), the evening ESL Communication Skills Program (page 8), the Online English and Academic Preparation Program (page 9), and the Online English Success in the Workplace Program (page 10). We have taught English as a Second Language to students from Houston and around the world since 1978. For over 45 years, our program has been a global gateway to the Rice experience.

Dr. Kathleen Sayers  
Director & Associate Dean, Glasscock School of Continuing Studies

## Intensive English Program

### Program Description

The Rice University Intensive English Program is open to non-native speakers of English who have a serious desire to improve their language skills. This challenging program is useful to working professionals and to students preparing for university study or professional programs. Students from more than 125 countries have attended the program.

The Intensive English Program offers six sessions each year, each session lasts seven weeks. In one year, students should be able to progress through the six-level core program. Classes meet on the Rice campus five days a week for four hours each day.

The course of study is based on an integrated-skills approach with listening, speaking, reading, writing and grammar components. Fluency and accuracy in both spoken and written English are emphasized. Classes average 12 students. The small class size allows each participant a maximum amount of individual attention and an opportunity to develop conversational skills.

### Course Description

Intensive English Program students build practical English skills for general, academic or professional purposes.

### Levels 1-4

In Levels 1-4, students concentrate on developing fundamental English skills in an interactive classroom setting. Coursework emphasizes those skills necessary for effective oral and written communication. Instruction covers all areas of language development: practical vocabulary, basic grammar, and the essentials of reading, writing, listening and speaking.

### Levels 5-6

In Levels 5-6, students continue to develop fluency and accuracy. Coursework focuses on comprehensive skills as well as academic preparation skills, including the fundamentals of essay writing and the development of critical reading, listening and note-taking skills.

### Advanced Level

The Advanced Level is for students whose proficiency in English is beyond the six-level core program. Courses at this level focus on diverse areas of interest such as current issues, cross-cultural concerns, public speaking, pronunciation, advanced reading and writing, and TOEFL/IELTS preparation. Students may enroll in the Advanced Level more than one time with a different curriculum each time.

# Intensive English Program

## Class Schedule

Classes at any specific level, beginning through advanced, will depend on sufficient enrollment. Students must be willing to accept a morning (8:30 a.m.- 12:30 p.m.) or afternoon (1-5 p.m.) schedule as assigned by the director.

## Intensive English Program Admission

Persons applying for admission to the intensive English Program must have graduated from secondary school. Admission to the program does not constitute admission to any other unit of Rice University. Students will not receive academic credit for courses in this program.

## Program Fees

Tuition:	\$2,850
Testing and registration:	\$100

All new students pay \$2,950 for their first session:

\$2,850 plus the \$100 non-refundable testing and registration fee. A deposit of \$400 is due upon acceptance into the program. New students must pay the balance of tuition by the placement test date for the session in which they are enrolling. (see calendar below).

## Application

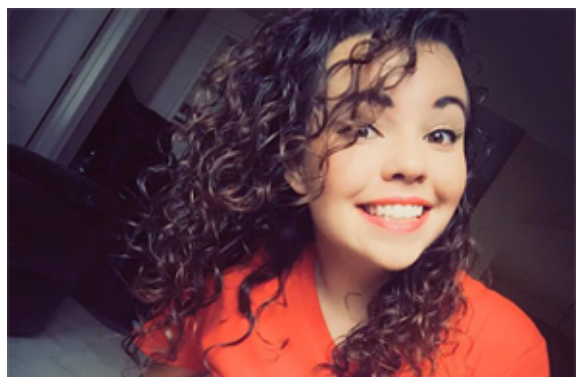
Complete the online application at [esl.rice.edu/intensive-english-program/apply](http://esl.rice.edu/intensive-english-program/apply). Applicants must submit their most recent academic transcript.

## Books

Book costs average approximately \$175 per session.

## Student Responsibility for Health Care

Information regarding student health care and medical insurance responsibilities is available at [esl.rice.edu/intensive-english-program/tuition-fees-and-refund-policy](http://esl.rice.edu/intensive-english-program/tuition-fees-and-refund-policy).



“Houston is a city with wonderful, multicultural aspects, which makes the experience more enriching. The Rice ESL Program takes this Houston essence to its classes.”

-Priscilla Araya, Costa Rica

## Intensive English Program Calendar 2025

### Session Dates: January 2-February 27

Application and re-enrollment deadline: November 26~, 2024  
 Placement test: January 2  
 Orientation: January 3  
 Classes: January 9-February 27  
 Martin Luther King Jr. holiday: January 20

### Session Dates: February 26-April 24

Application and re-enrollment deadline: February 7  
 Placement test: February 26  
 Orientation: February 27  
 Classes: March 6-April 24  
 Spring holiday: April 18

### Session Dates: April 23-June 18

Application and re-enrollment deadline: April 4  
 Placement test: April 23  
 Orientation: April 24  
 Classes: April 30-June 18  
 Staff Development Day (no classes): May 16  
 Memorial Day holiday: May 26

### Session Dates: June 23-August 19~

Application and re-enrollment deadline: May 30  
 Placement test: June 23  
 Orientation: June 24  
 Classes: July 1-August 19  
 Independence Day holiday: July 4

### Session Dates: August 21-October 16

Application and re-enrollment deadline: August 1  
 Placement test: August 21  
 Orientation: August 22  
 Classes: August 28-October 16  
 Labor Day holiday: September 1  
 Staff Development Day (no classes): October 3

### Session Dates: October 16-December 12

Application and re-enrollment deadline: September 26  
 Placement test: October 16  
 Orientation: October 17  
 Classes: October 23-December 12  
 Thanksgiving holidays: November 26-28





## Scholarships

A limited number of partial scholarships are available to re-enrolling students.

## Student Services

Students in the Intensive English Program receive personal attention from the program's staff. Special services include:

- Orientation to the program, the Rice University campus and the city of Houston
- A Rice University Student ID that allows student access to campus activities, such as movies, sports and concerts, for free or at a reduced rate, for a fee of \$15 per seven-week session\*
- Access to the state-of-the-art [Recreation Center](#) for a fee of \$79 per seven-week session\*
- Immigration counseling
- Academic advising for college and university admissions
- Student progress evaluation at the end of each session
- Access to campus parking in assigned areas for a \$35 fee per seven-week session\*
- Student social and cultural activities each session, including picnics, the Houston Livestock Show and Rodeo, sports events such as professional baseball, basketball and soccer, and field trips to museums and other destinations

\*Fees are subject to increase.

## Cost of Living Estimates

Students in the Rice University Intensive English Program spend an average of \$2,200 per month on rent, food and other expenses. The following chart gives monthly cost of living estimates.

## Moderate-Level Monthly Expenses

Rent:	\$1,200
Food:	\$700
Personal*:	\$300
Total:	\$2,200

\*Includes transportation, clothing, recreation, incidentals, etc.

## Housing Information

Students are responsible for making their own housing arrangements. Moderately priced facilities are generally available. Although the program does not provide housing or make housing arrangements, students may contact the Intensive English Program for a list of housing suggestions.

## Intensive English Program Refund Policy

The \$100 testing and registration fee is non-refundable. There is no refund for any student withdrawing after the tenth day of class. All refund requests must be submitted in writing to [esl@rice.edu](mailto:esl@rice.edu). See the full refund policy at [esl.rice.edu/intensive-english-program/tuition-fees-and-refund-policy](http://esl.rice.edu/intensive-english-program/tuition-fees-and-refund-policy).



# Visa Information

## F-1 Visa Application Process

The Intensive English Program is authorized to issue the I-20 form that students need to apply for an F-1 student visa for full-time intensive English study.

Students requesting an I-20 must submit the following documentation to the Rice University Intensive English Program:

- \_\_\_ Application with \$100 testing and registration fee
- \_\_\_ Deposit of \$400 (Payment is due when accepted into the program.)
- \_\_\_ Confirmation of financial resources (\$3,765 per month for tuition and living expenses)
- \_\_\_ Most recent academic transcript
- \_\_\_ Copy of passport identification page(s) (The copy must show picture, name, birth date and passport expiration date.)

Transfer students must also present:

- \_\_\_ Signed transfer form from the foreign student adviser at the school the student last attended verifying eligibility to transfer (The form may be downloaded at [esl.rice.edu](http://esl.rice.edu).)
- \_\_\_ Copy of I-20 from the school last attended
- \_\_\_ Copy of F-1 visa page
- \_\_\_ Copy of I-94 admission form
- \_\_\_ Transcript from current school

The prospective F-1 student should present the following papers to a U.S. Consulate:

- \_\_\_ Passport, valid for at least six months
- \_\_\_ Confirmation of financial resources
- \_\_\_ I-20 form
- \_\_\_ Receipt for the I-901 SEVIS fee. (For further information, consult the U.S. government website at [ice.gov/sevis/i901/index.htm](http://ice.gov/sevis/i901/index.htm).)

To maintain F-1 visa status, a student must attend a full course of study (20 hours per week) in the Rice University Intensive English Program. F-1 students interested in taking time off from study should review the “Vacation Policy” at [esl.rice.edu/intensive-english-program/application-process](http://esl.rice.edu/intensive-english-program/application-process).



“I can’t thank this program enough! Teachers, directors and staff were perfectly awesome, friendly, well-educated and they knew what they were doing! Dream big! Rice University will help you make your dreams come true!”

-Levent Karabulut, Türkiye

## Confirmation of Financial Resources

As part of the I-20 application process, the student must demonstrate proof of financial support for the duration of their planned length of study (\$3,765 per month for tuition and living expenses.) This may be done by submitting one or more of the following:

1. Bank statement(s) showing any of the options below:

- Personal funds
- Family funds plus a letter of support stating the intent to sponsor you during your studies
- Personal sponsor plus a letter of support stating the intent to sponsor you during your studies

Bank statement(s) must be less than 6 months old. Statement(s) must give the following details about the account:

- Name on the account
- Current balance of available funds

These documents must also be presented to the U.S. Consulate with the visa application.

2. Affidavit of Financial Support (I-134) from an individual sponsor (U.S. citizen or permanent resident) inside the United States. Proof of financial resources must accompany the affidavit. Forms may be obtained from the U.S. government at <https://www.uscis.gov/i-134>.

3. A scholarship letter from the sponsoring organization or government detailing the amount of support the student will receive and state the duration of funding.

**Prospective students must enter the United States on a student visa.** Persons in the U.S. with diplomatic or other visas may also be eligible for the program provided study is not the main purpose of their stay in the United States.





“The faculty is what makes this place so special, they all give their best every session to make this program enjoyable and an exceptional learning environment. It always felt like home.”

Mustafa Kamil, Iraq

### About Rice University

Rice University is a private, coeducational institution known for its academic excellence and the achievements of its faculty, graduates, and students. Rice offers outstanding programs in architecture, business, engineering, humanities, music, natural science and social sciences.

Although admission to the Intensive English Program does not constitute admission to any other unit of Rice University, facilities of the university are available to Intensive English students, including the [Fondren Library](#) and the [Recreation Center](#). Most activities are also available including sports, exhibitions, concerts, films and lectures. For further information on the University, consult [gradute.rice.edu/vr-tour](http://gradute.rice.edu/vr-tour).

### About Houston

Located in the state of Texas, Houston has a metropolitan area population of more than six million. The city boasts two international airports, museums, operas, theaters, concerts, festivals, outstanding restaurants, professional sporting events, one of the world's foremost medical centers, the NASA Johnson Space Center and many other attractions.

Houston is the fourth largest city in the nation and is home to a culturally diverse population. A metrorail system connects downtown Houston with Rice University and the Texas Medical Center. Large retail centers such as the celebrated Galleria make Houston a favorite shopping destination for visitors from all over the world. Galveston's beaches, less than an hour away, afford many recreational opportunities.



### Staff of the Rice University Language Programs

Kathleen Sayers, Ph.D., Director, Associate Dean, Glasscock School of Continuing Studies  
 Pamela Howard, M.A., Associate Director  
 Rachel Kraut, Ph.D., Director of Innovative Academic Programs  
 Bianca Perez, Enrollment Coordinator  
 Hadrian Barbosa, Program Coordinator

### Intensive English Program Faculty

Lisa Craven, M.Ed.  
 Anna Hood, M.A.  
 Alice Llanos, M.A.  
 Neda Zafarianian, Ed.D.

**Apply Today**





## Special Programs

Intensive English classes are available either on site or on the Rice University campus. A minimum of 12 students is required to form a class. Classes are offered at intermediate or advanced levels of proficiency. Course schedule and fees will vary according to the type of instruction. For more information, contact the Language Programs office at [esl@rice.edu](mailto:esl@rice.edu) or 713-348-4019.

**Apply Today**



# ESL Communication Skills Program

## Intermediate and Advanced Levels



The ESL Communication Skills Program offers classes for those who wish to improve their everyday English communication skills or enhance their command of English for professional purposes. These non-credit classes address spoken communication skills and are designed for those who do not wish to enroll in a full course of study. Classes are for students at an intermediate or advanced level of proficiency. Those planning to study on an F-1 visa should consult the Intensive English Program section (see page 2). Classes are small, with an average of 12 students per class. Students develop both fluency and accuracy in an interactive classroom setting.

Evening classes meet twice a week (either Monday and Wednesday or Tuesday and Thursday) for eight weeks. Classes meet from 5:45-7:15 p.m. or 7:30-9 p.m. on the Rice campus. The exact schedule of classes is determined by student enrollment. Advanced oral presentation skills, pronunciation and writing classes are offered in sessions when demand is sufficient. Students are assigned class days and times based on their proficiency levels and available space.

### Tuition and Fees

Tuition for each eight-week session is \$500, which includes a \$30 processing fee. Book costs are not included in the tuition.

Visit [esl.rice.edu](http://esl.rice.edu) to view course information, requirements and our refund policy.

### Program Calendar 2025

**Winter Session:** January 22-March 18  
Discount deadline\*: Friday, January 3  
Application deadline: Friday, January 3  
Placement test\*\*: Wednesday, January 8

**Spring Session:** March 26-May 20  
Discount deadline\*: Friday, March 7  
Application deadline: Wednesday, March 12  
Placement test\*\*: Wednesday, March 12

**Summer Session:** June 12-August 7  
Discount deadline\*: Friday, May 16  
Application deadline: Friday, May 16  
Placement test\*\*: Tuesday, May 20  
Juneteenth holiday: Thursday, June 19

**Fall Session:** September 24-November 18  
Discount deadline: Tuesday, September 2  
Application deadline: Tuesday, September 2  
Placement test\*\*: Thursday, September 4

\*Students returning within a year receive a discount if the application is submitted by the discount deadline.

\*\*Online placement testing link will be emailed.

**Apply Today**



# Online English and Academic Preparation

## Certificate Program



Online English and Academic Preparation is a certificate program for students with a high-intermediate to advanced level of English. The certificate program is designed to help students strengthen their English while developing academic skills necessary for success at an American university or college. Students may choose from two options within the certificate program:

- **Pre-Collegiate:** This option is for international students who would like to come to the United States to study for a bachelor's degree.
- **Grad Track:** This option is for international students who would like to pursue a master's or doctoral degree in the United States.

### Course Information

The total length of time required to complete the Online English and Academic Preparation certificate program is 10 weeks. This includes three 3-week courses and a 1-week final capstone project.

Students in both options will take the following courses:

- Listening, Speaking and Critical Thinking
- Writer's Workshop
- Reading and Notetaking

### Tuition and Fees

Pre-Collegiate - Application fee: \$30; Tuition: \$910

Grad Track - Application fee: \$30; Tuition: \$1,110

### Program Calendar 2025

**Winter Session:** January 2 - March 17  
Application deadline: December 2, 2024

**Spring Session:** March 27 - June 10  
Application deadline: March 10

**Summer Session:** June 23 - September 10  
Application deadline: June 2

**Fall Session:** September 11 - November 24  
Application Deadline: August 25

### Program Requirements

#### Pre-Collegiate option:

- demonstrate a minimum of a high-intermediate level of English
- completion or near completion of a high school diploma

#### Grad Track option:

- demonstrate a minimum of an advanced level of English
- completion or near completion of a bachelor's degree

All students must complete the online orientation.

**Apply Today**

# Online English Success in the Workplace

## Certificate Program



English Success in the Workplace consists of three non-credit courses that start at a low-intermediate level. These courses use an integrated-skills approach to help students improve their command of English in the workplace and strengthen their communication skills. Courses include engaging instructional videos that can be played and paused as needed, a variety of practice activities and opportunities for interaction.

### Course Description

The program consists of three possible tracks:

- **Track I:** 3 classes from low-intermediate to high-intermediate/low-advanced
- **Track II:** 2 classes from intermediate to high-intermediate/low-advanced
- **Track III:** 1 class for high-intermediate/low-advanced

### Tuition and Fees

Tuition and fees for each session are \$705 for new students and \$675 for continuing students.

### Financial Aid

Please contact us at [esl@rice.edu](mailto:esl@rice.edu) to learn more about financial aid and scholarship opportunities for the Online English Success in the Workplace Certificate Program.

### Program Calendar 2025

**Winter Session:** January 2 - March 4  
Application deadline: December 2, 2024

**Spring Session:** March 27 - May 27  
Application deadline: March 10

**Summer Session:** June 23 - August 25  
Application deadline: June 2

**Fall Session:** September 11 - November 10  
Application Deadline: August 25

### Program Requirements

Students successfully completing through Level 5 will receive a program certificate. Students who do not finish Level 5 will receive a course certificate for each course completed.

Persons applying for admission to this program must have graduated from secondary school. New students must take the online placement test and complete the online orientation.

**Apply Today**





## Contact Us

- Website: [esl.rice.edu](http://esl.rice.edu)
- Email: [esl@rice.edu](mailto:esl@rice.edu)
- Phone: 1-713-348-4019

### Location

The Language Programs office is located in the Anderson-Clarke Center near Entrance 8 at University Boulevard and Stockton Drive. See the campus map at [rice.edu/maps](http://rice.edu/maps). Students will receive detailed parking information before the start of each session.

### Take a Virtual Tour

Our building includes 24 classrooms, conference rooms, a language center, a freestanding auditorium and a commons area and terrace for events. [Take a tour](#).

### Find us on Social Media

Stay connected! Follow us on social media to learn about upcoming events and see photos from social and cultural activities.



[facebook.com/RiceESL](https://facebook.com/RiceESL)



[instagram.com/riceesl](https://instagram.com/riceesl)



[x.com/RiceESL](https://x.com/RiceESL)



[esl.rice.edu/blog](http://esl.rice.edu/blog)



"I decided to pursue my academic career in the U.S. while I was a student at the Rice ESL Program. As I prepared for the GRE and TOEFL exams, I was able to apply all the language skills that I had gained for the first time, and it was really exciting to see how I could use my knowledge. I still see its huge impact on my academic writing."

-Asya Ozkizilcik, Türkiye

"Improving my communication skills gave me more confidence to participate in important meetings and share my ideas and thoughts with coworkers and business partners. I have been able to develop my potential at work."

-Diorgenes Borges, Brazil

